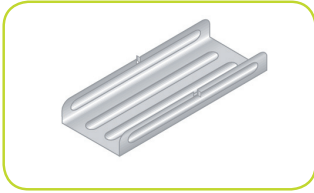


PLADUR® T-45 / T-60 CHANNEL CONNECTORS

02b01002EN - Rev. 06/2018



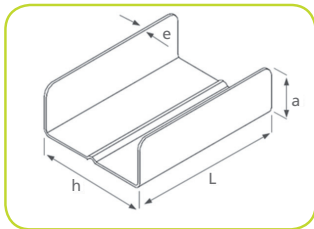
DESCRIPTION

U-shaped connectors for continuous ceilings, made of low-carbon steel sheets, subjected to hot-dip continuous galvanisation, for subsequent cold working. A combination of high-quality steel, high-level coating and a production process based on the latest technologies in profiling and stamping, the Pladur® T-45 and T-60 channel connectors are perfectly protected from corrosion and highly mechanically resistant.

APPLICATIONS

Suitable for connecting the Pladur® T-45 and T-60 profiles lengthways.

PROFILE DESIGN



TECHNICAL SPECIFICATIONS

FEATURE	VALUE	
	Pladur® T-45 channel connectors	Pladur® T-60 channel connectors
Type of steel	DX51D	
Lining	ZINC LAYER (Z140)	
Thickness (e) (mm)	0.6	1.2
Width (h) (mm)	42.8	58.35
Length (L) (mm)	90	80
Height (a) (mm)	16.15	24.8
Approximate weight (kg/m)	0.04	0.06
Reaction to fire performance	A1 (Does not contribute to fire)	
Applicable regulations/standards	EN-13964 CE	

PRESENTATION

Packaging

	Pladur® T-45 channel connectors	Pladur® T-60 channel connectors
Units / Box	100	100
Boxes / Pallet	96	96

Central Offices and Factory in Valdemoro-Madrid
 Laminated plasterboards, Transformations,
 Profiles and Adhesive Compounds

This document is provided as a guideline only and refers to installations and applications based exclusively on the use of PLADUR® materials in accordance with the specifications contained herein. Any use or installation based on PLADUR® materials that does not follow the recommendations and parameters set out in this document must be confirmed with the Pladur Gypsum S.A.U. Technical Department first. PLADUR® is a registered trademark belonging to Pladur Gypsum, S.A.U. Published June 2018. This publication is considered valid save for any typographic or transcription error. All rights reserved, including the incorporation of improvements or amendments.

TOLERANCES

FEATURE	VALUE
Thickness (e)	± 0.05 mm (T-45) ± 0.07 mm (T-60)
Width (h)	± 0.5 mm (T-45) ± 0.3 mm (T-60)
Height (a)	± 0.5 mm (T-45) ± 0.4 mm (T-60)
Length (L)	± 0.5 mm (T-45) ± 0.3 mm (T-60)

INSTALLATION

- The regulations and laws applicable in the territories where the materials are installed must be followed at all times.
- For any queries regarding the recommendations from Yesos Ibéricos for the installation or for technical support, please write to info@pladur.com.

PRECAUTIONS

- We only guarantee the results obtained in our tests or predictions, as set out in our technical documentation, when the product is used in combination with other original Pladur® products (boards, profiles, compounds, screws and accessories).
- For detailed information on safety, please read the product safety data sheet.

STORAGE & HANDLING

- Store horizontally, on a dry and flat surface, preferably protected from sunlight and rain.
- We recommend wearing mechanical protection gloves when handling the profiles, as advised in Standards EN 420 and EN 388.

Customer Service
+34 902 023 323
info@pladur.com
www.pladur.com



Pladur®
 Makes it a reality